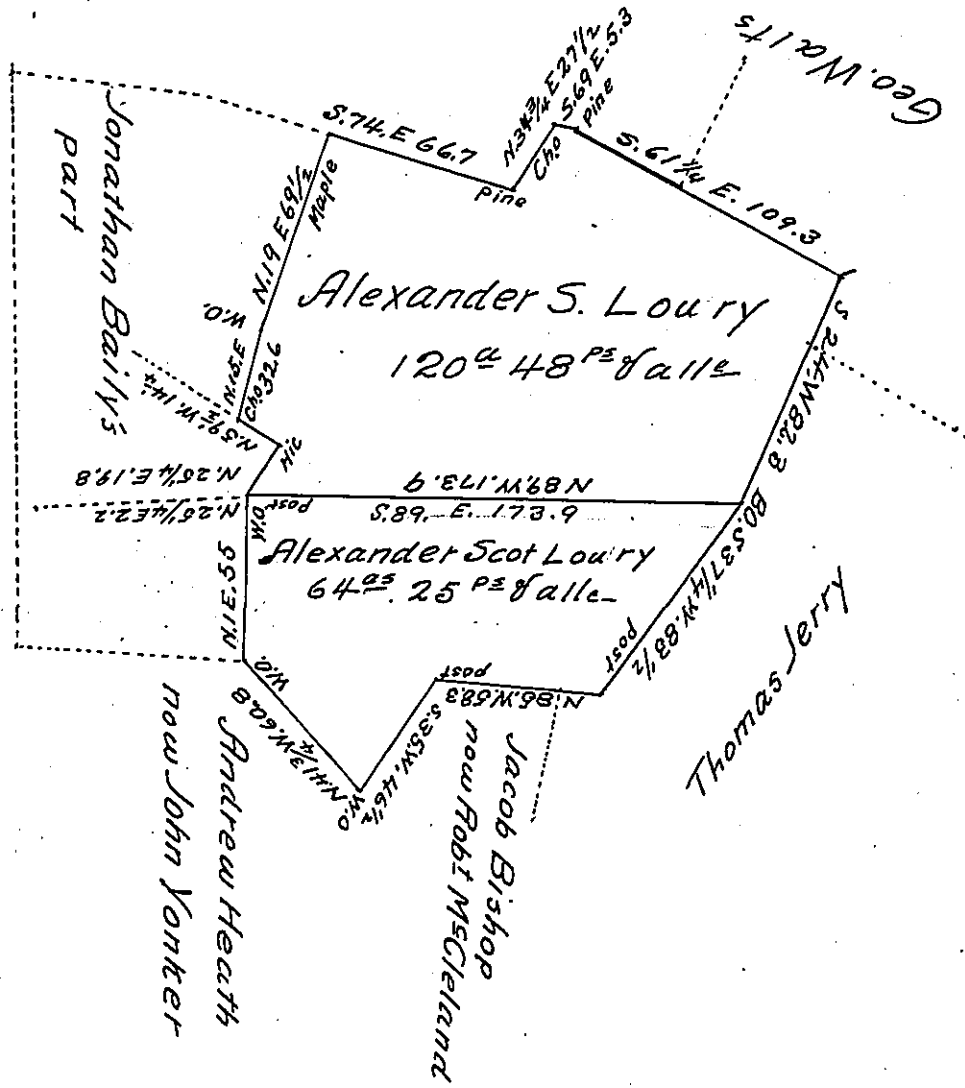


Note from W.O. N. 1 E 55 W.O. hence to the
and N 59 1/2 W continued beyond the Cho
are lines of a Survey in name of Wm
Dunlap made in 1794. is patented
and now owned by John Yorker



A connected draft of parts of two adjoining tracts of land situate
in Bethel Township Bedford County the one part containing 120 acres
48 perches being part of a tract surveyed for Alexander S Loury
the 19th March 1805 On Warrant 29th September 1796.

The other containing 64 acres 25 perches being part of a tract sur-
veyed for Alexander Scot Loury the 18th March 1805 on Warrant
August 31st 1787

Divided for John Yorker January 16th 1838

Wth A Vickroy D.S.

To John Taylor Esq. S.G.

IN TESTIMONY that the above is a copy of the original remaining on file in
the Department of Internal Affairs of Pennsylvania, made
conformably to an Act of Assembly approved the 16th day of
February, 1833, I have hereunto set my Hand and caused
the Seal of said Department to be affixed at Harrisburg,
this eighteenth day of October 1905

George P. Brown
Secretary of Internal Affairs.